



JUNIOR RANGERS

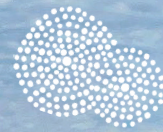


CONNECTION TO COUNTRY WADAWURRUNG



ACTIVITY

BOOK



Parks
VICTORIA

Sharing
Nature's
Stories

ACKNOWLEDGEMENT OF COUNTRY

HAVE A GO!

Develop your own personal Acknowledgement of Country!

Aboriginal cultural landscapes are the core of Victoria's parks and reserves. They have been modified over many thousands of years. These landscapes show us how Traditional Owners engage with their culture and experience their surroundings.

These landscapes are a product of thousands of generations of activity, culture and settlement patterns. The landscapes we see today are influenced by the skills, knowledge and activities of Traditional Owners.

Parks Victoria acknowledges the Traditional Owners of these cultural landscapes and their continuous care and management of Country on which we learn, play and live.

Parks Victoria acknowledges the Wadawurrung People as the Traditional Owners of the lands in the Western area of Melbourne including Geelong and Ballarat. Wadawurrung Traditional Owners Aboriginal Corporation have generously assisted in the development of this booklet.

To learn more and to visit their website, scan the QR code.

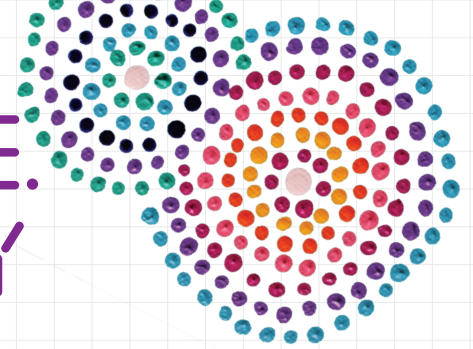


Jenna Oldaker is a Wadawurrung Traditional Owner and Visual Artist. Jenna describes her artwork below:

This artwork illustrates the beautiful Wadawurrung Country. Can you see this artwork throughout the booklet? As we travel across Wadawurrung Country from left to right, we can see Youang (big hill) region, kangaroo tracks, tree leaves, a platypus (Perridak), Bundjil the eagle

(the spirit creator of Wadawurrung Country) returning boomerangs, and the symbol for fire. The top right-hand corner of the painting illustrates meeting place, a place where we all come together. The classic U shapes symbolise people, whilst the circles and lines illustrate journey paths. As Wadawurrung people have cared for this land for thousands of years, the Country has reciprocated and cared for us providing healthy and nourished land and water, allowing us to create new life and spirit.

COUNTRY IS MY HOME. HOME IS MY COUNTRY

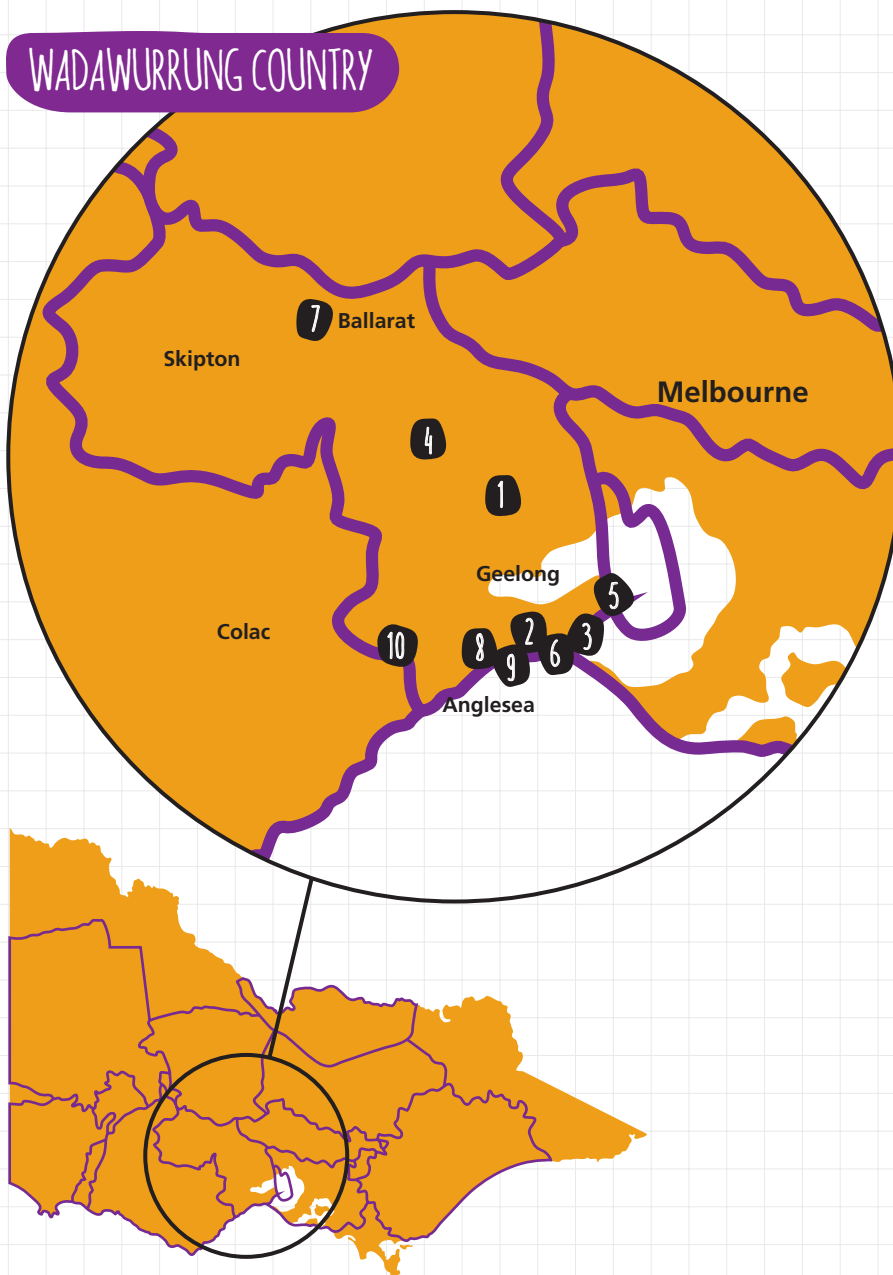


For thousands of years, Traditional Owner communities have carefully managed their Country for sustainable food supplies, well-being and strong culture.

You can recognise Traditional Owners of Victoria by acknowledging the lands which you are on.

Victoria's Traditional Owners have managed and cared for these lands for thousands of years. The larger map below identifies Wadawurrung Country. The smaller map identifies Victoria's Traditional Owners and their traditional Country.

- 1 You Yangs Regional Park
- 2 Lake Connewarre Wildlife Reserve
- 3 Port Phillip Heads Marine National Park
- 4 Brisbane Ranges National Park
- 5 Edwards Point Wildlife Reserve
- 6 Barwon Bluff Marine Sanctuary
- 7 Woowookarung Regional Park
- 8 Point Addis Marine National Park
- 9 Breamlea Flora and Fauna Reserve
- 10 Great Otway National Park



My name is:

I live on the Traditional Country of:

On holidays I have visited the Traditional Country of:

In Victoria, a special place I would like to visit is:

You can scan the QR code to find out who the Traditional Owners in Victoria are.



CARING FOR WADAWURRUNG COUNTRY

Country includes everything in our environment, native animals and people. Healthy Country is vital for all living things to live in balance. In Wadawurrung culture, Country is treated with enormous respect.

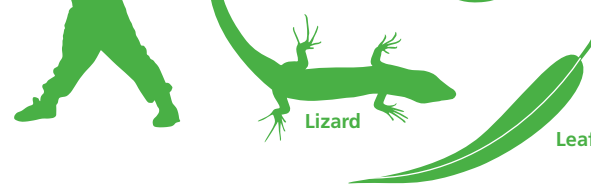
Wadawurrung People believe if we look after Country, it will look after us in return. We can all help with the responsibility to care for Country by remembering these tips:

- Leaves, seed pods, logs and rocks all have value to wildlife or could have cultural significance. Leave these in nature and on Country.
- When exploring nature, stick to walking tracks. This helps care for cultural heritage and the habitats and safety of native animals.
- Plant indigenous trees and plants at your home or school. This creates habitats for native wildlife.

Culture is a way of living passed down through generations in a community. Cultural heritage can include physical evidence, such as trees, rock markings and artefacts or non-physical values such as language and stories. Cultural significance means the parts of heritage that are very important to the community.

Wadawurrung Traditional Owners Aboriginal Corporation have developed an app called 'Wadawurrung Language – Intro' available for free on Apple devices. The app is a great introduction to Wadawurrung language.

Use the app to match the images to the Wadawurrung word by drawing a line between the image and word.



WIYN

WALERT

YURN

BABAB

WAN.GIM

LELON

MURRAN

YOUANG

BINHAK

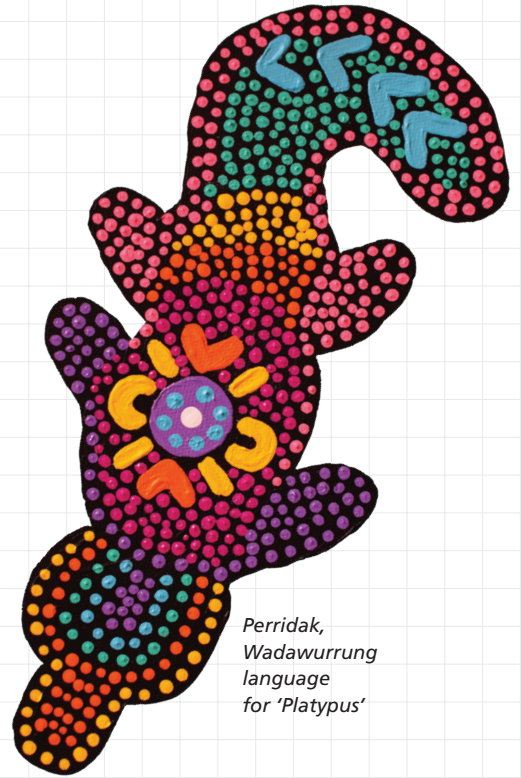
YINYA-YINYA



The Youang (big hill) region is one of the most significant cultural sites for Wadawurrung people, and this is represented by the large arches.
Jenna Oldaker

DISCOVERY COUNTRY

Circle the words below when you find them in the puzzle. When you're finished, use the remaining letters to fill the spaces below. Remember to start at the top row and read the remaining letters from left to right.



Perridak, Wadawurrung language for 'Platypus'

A C K N O W L E D G E M E N T
 S O C E V A E K R E R S M R B
 U N O Y O D N A E E O T U E O
 S N O S H A O N A L C O F O O
 T E L U L W D G M O K N E C M
 A C A V A U L A T N W E A H E
 I T M U E R A R I G E T T R R
 N I O A N R R O M D L O H E A
 A O N F E U T O E E L O E L N
 B N C O N N N E C T E L R D G
 L T O C O G C U L T U R E U Y
 E N L A N G U A G E T R Y F O
 A B O R I G I N A L I N A D U
 C O U N T R Y Y O U R O R W Y
 P O S S U M S K I N N O T N A
 N N E C T P L A N T S I O N N
 B A L L A R A T S T O T H E G
 W A T E R L A L A N D S N D S

- Geelong
- Boomerang
- You Yangs
- Aboriginal
- Ballarat
- Emu feather
- Rockwell
- Art
- Connection
- Stone tool
- Land
- Water
- Culture
- Sustainable
- Plant
- Possum skin
- Country
- Wadawurrung
- Kangaroo
- Coolamon
- Language
- Ochre
- Dreamtime
- Acknowledgement

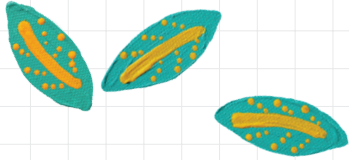
ANSWER: EVERYONE SHOULD VALUE AND FEEL CONNECTED TO COUNTRY. FIND YOUR OWN CONNECTIONS TO THE LANDS.



TIP!

Connect with local Traditional Owners in your area and participate in local events to expand your knowledge.

A SUSTAINABLE LIFE



Scan the QR code to learn more about Parks Victoria's Managing Country Together team



Across Victoria's lands and waterways, we can see evidence of Traditional Owners' sustainable lifestyles. The landscape tells us a lot about how Traditional Owners have continuously used the environment sustainably for more than 65,000 years, long before European settlement. At Parks Victoria, we have a team called Managing Country Together. The key role of this team is to support Parks Victoria to work in partnership with Traditional Owners to protect cultural values found in Victoria's protected places.

Rockwells

Rockwells were a way of sustainably collecting water. Wells can naturally form in rocks and Traditional Owners used these to make larger holes and channels to better collect and store water all year round.

Did you know?

In addition to collecting water, rock wells can be used for the storage of grains and seeds.



A rockwell on Wadawurrung Country at You Yangs Regional Park. This well is full most of the year, even when it is hot and dry.

Possum skins

Possum-skin cloaks are a very special possession. Before European settlers arrived in Australia, almost every Traditional Owner living in south eastern Australia wore animal skins. One cloak can be made of many possum skins. The skins are sewn together using native grasses or bark and a sharp stick or bone.

Did you know?

Possum skin is waterproof, therefore you can create a water vessel to ensure you have drinking water available on your travels.



Fur of a Brushtail Possum



Stone tools

Stone tools are made and used for everything that tools and knives are used for. They cut plants, food and meat, scrape bark or animal skins, engrave, chop, carve and chisel. Throughout Victoria, stone tools are found in many shapes and made of different types of stone. Cutting edges of the stone axe-heads are shaped and sharpened with great skill.

Did you know?

Larger stone tools like the one pictured could be attached to wooden handles.



Axe-head made from greenstone

Plant resources

Plants are a vital resource for sustainable living. The leaves or stems of plants and grasses are used to make nets, baskets, bags, fish and eel traps.

Did you know?

Apart from creating resources, plants can be used for foods, drinks and medicines.



Common Tussock-grass



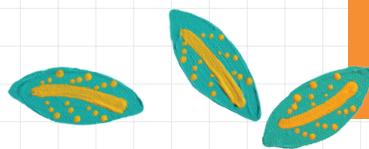
Scarred Tree on Wadawurrung Country

Scarred trees

Traditional Owners make changes to trees as part of their cultural traditions for many reasons. They might remove bark to create shelters, canoes, shields and coolamons. This process leaves a scar on the tree.

Did you know?

Scarring doesn't cause the tree to die, the tree will continue to live and grow.



BUNDJIL THE CREATOR SPIRIT

Wadawurrung believe Bundjil, the Wedge-tailed Eagle, is their creator spirit. Bundjil created the lands, waterways, native animals, and people. With a wingspan reaching 2.3 metres, you can see Bundjil soaring in the sky from a long distance.

The artist: Jenna Oldaker is a Wadawurrung Traditional Owner and Visual Artist.

Through her art, Jenna expresses her deep connection and love for her culture, country, and heritage. Every piece created by Jenna comes from her heart and strong connection to Wadawurrung culture. Her passion is to create each work with its own individual story and meaning.

Based in Ballarat on Wadawurrung Country, Jenna uses a mixture of traditional and contemporary colours to create unique and detailed artworks. Working primarily with acrylic paints on canvas, Jenna enjoys creating new pieces using a variety of forms and dimensions.

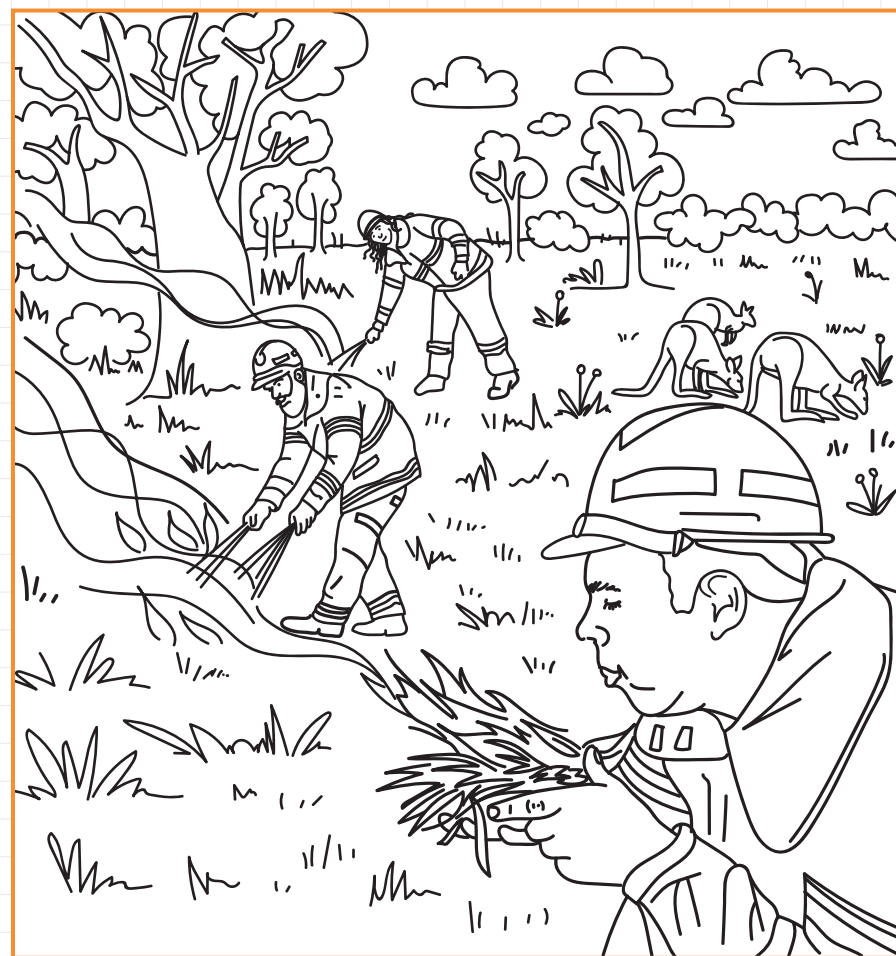
FIRE: FRIEND OR FOE?


When Country is healthy, animals, plants, habitat and community thrive. Traditional Owners have managed these lands with fire for over 65,000 years. When Wadawurrung people use fire as a tool to manage and look after their Country, it is called 'fire stick farming'.

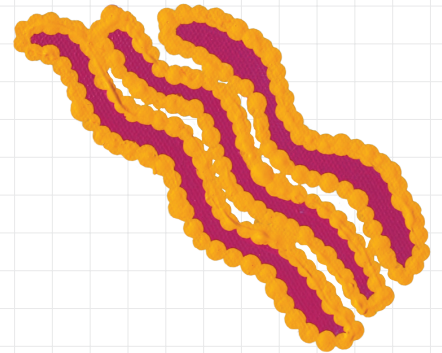
Fire stick farming can happen throughout the year depending on the landscape. It helps Country heal. It encourages plants to grow and wildlife to feed on the new growth. It may also prevent large wildfires. Parks Victoria work with Traditional Owners to undertake burns across Victoria.

Colour in the drawing. Can you find and circle these things?

- Fire started using plants and sticks, not chemicals.
- Small fire that doesn't harm wildlife.



 Victoria's networks of parks and reserves form the core of Aboriginal cultural landscapes. Parks Victoria acknowledges the continuing connection that Traditional Owners have to these landscapes and recognises their ongoing role in caring for Country on which we learn, play and live.



- Tall trees that are not harmed.
- New, healthy growth after the last burn.
- Wildlife enjoying new food in their habitat.

BORN TO EXPLORE

Junior Rangers are born to explore. If you have an interest in nature, animals and the outdoors then Junior Rangers is for you.

Junior Ranger activities are led by a park ranger and are designed to get families outdoors, have fun and learn about Victoria's wonderful parks together.

Visit juniorrangers.vic.gov.au for more information.